



INVESTING IN INNOVATION & HIGH QUALITY

Trusted by Surgeons Worldwide

surgical
sutures



MONOFAST (PGCL)
PROFIMED (PTFE)

Geistlich Pharma Australia
The Zenith, Tower A, Level 21
821 Pacific Highway
Chatswood NSW 2067, Australia
Phone AU 1800 776 326

Distributed by
Geistlich

MONOFAST (PGCL) ABSORBABLE SUTURES



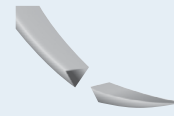
MONOFAST monofilament synthetic absorbable surgical suture is indicated for use in general soft tissue approximation and/or ligation.

The implantation of the MONOFAST monofilament synthetic absorbable surgical suture elicits a minimal inflammatory reaction which is followed by the development of fibrous connective tissue in its place.

The retention of the MONOFAST suture is 68-78% of the original tensile strength after the 1st week and approximately 30% after the end of the 2nd week. The absorption of the suture is essentially completed after a period of 90-110 days. Its original tensile strength is essentially lost 28 days after its implantation.

ADVANTAGES OF MONOFAST SUTURES

- Smooth passage through tissue
- Minimised tissue drag & trauma
- High straight-pull tensile & breaking strength
- Minimal tissue reaction
- No removal session needed
- Resistant to microbe incubation
- Softer than other monofilament suture types
- Good knot security
- Fully biocompatible



Reverse Cutting
3/8 CIRCLE
Suture Length 45cm

THREAD THICKNESS USP	CODE	COLOUR	PACK
----------------------	------	--------	------

12mm Needle Size

4/0	MED-18612	Violet	24
5/0	MED-18611	Violet	24
6/0	MED-18610	Violet	24

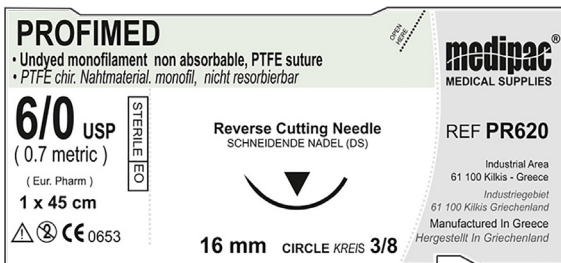
16mm Needle Size

4/0	MED-18622	Violet	24
5/0	MED-18621	Violet	24

19mm Needle Size

4/0	MED-18632	Violet	24
5/0	MED-18631	Violet	24

PROFIMED (PTFE) NON-ABSORBABLE SUTURES



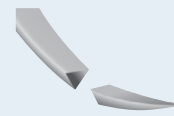
PROFIMED is an ideal suture for dental bone grafting and implant procedures where a soft monofilament suture is desirable.

PROFIMED sutures are most often used in conjunction with bone grafting, the placement of dental implants, periodontal surgery and soft tissue grafts.

PROFIMED is biologically inert and chemically non-reactive. In addition, the monofilament construction prevents bacterial wicking which is associated with braided sutures. Unlike other synthetic monofilament sutures, the material is supple and well tolerated in the mouth.

ADVANTAGES OF PROFIMED SUTURES

- 100% Pure PTFE (without any dyes or other additives)
- Excellent biocompatibility
- Ideally suited for application of implants
- Very soft to avoid any damage
- High knot pull strength
- Free of APFO, absolutely no health hazard
- Surface structure prevents merging of skin and tissues
- Hydrophobic and oleophobic (no blood penetration)
- Extremely low friction coefficient (for skin and tissue protection)
- Little or no package memory



Reverse Cutting
3/8 CIRCLE
Suture Length 45cm

THREAD THICKNESS USP	CODE	COLOUR	PACK
----------------------	------	--------	------

12mm Needle Size

4/0	MED-PR612	Undyed	24
5/0	MED-PR611	Undyed	24
5/0	MED-PR611Z	Undyed	12
6/0	MED-PR610	Undyed	24
6/0	MED-PR610Z	Undyed	12

16mm Needle Size

4/0	MED-PR622	Undyed	24
4/0	MED-PR622Z	Undyed	12
5/0	MED-PR621	Undyed	24
5/0	MED-PR621Z	Undyed	12
6/0	MED-PR620	Undyed	24
6/0	MED-PR620Z	Undyed	12

19mm Needle Size

4/0	MED-PR632	Undyed	24
4/0	MED-PR632Z	Undyed	12
5/0	MED-PR631	Undyed	24
5/0	MED-PR631Z	Undyed	12
6/0	MED-PR630	Undyed	24
6/0	MED-PR630Z	Undyed	12